

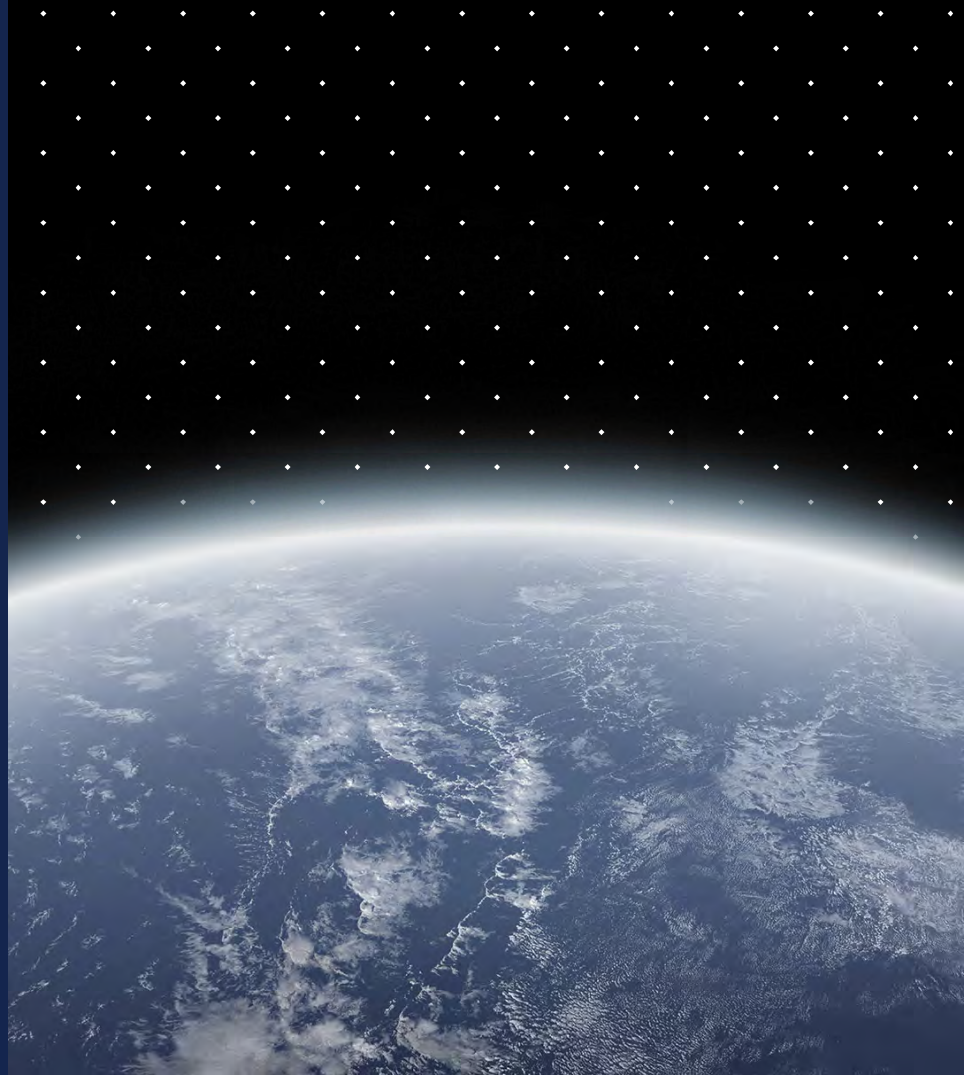


# WE HELP EARTH BENEFIT FROM SPACE

## ESRANGE WELCOME AND SAFETY PRESENTATION

Author: Mattias Abrahamsson Version: 1.5

22nd February 2022



# A MESSAGE TO OUR CUSTOMERS



On behalf of all the staff I would like to welcome you to Estringe. Over the past 50 years we have provided launch services to over 570 rockets and 640 stratospheric balloons.

There are many challenges facing us at the moment but rest assured that we remain committed to our customers.

Lennart Poromaa  
President, Science Services



# COVID-19



I would like to warmly welcome you to Esrange Space Center. My team is looking forward to resume campaign activities.

The challenging times we are experiencing with the Covid-19 virus spread around the world requires extraordinary measures to be implemented.

We want everyone to have a safe and healthy environment during the campaign.

Your stay at Esrange will differ from what you are used to, and you will receive additional instructions on safety measures with regards to Covid-19 virus.

There will be signs and area maps together with instructions, to guide you at the base.

It is of the greatest importance that you follow the instructions at all times.

If you have any questions or if anything is unclear, please address the campaign project manager.

I hope your stay at Esrange still will be safe and as pleasant as possible under the present conditions.

Welcome,

Marko Kohberg

Manager Rocket And Balloons department

# ABOUT THIS PRESENTATION



- This welcome and safety presentation is generic and applicable to all Estring projects.
- If there are changes to any information provided in this presentation they will be given to you by the SSC Campaign Manager prior to or on arrival on base.

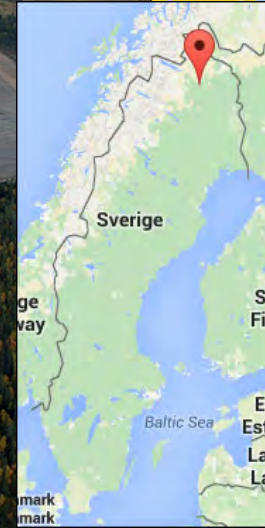
***It is essential that all visitors read the enclosed presentation and are aware of it's contents. Your safety may depend on it.***



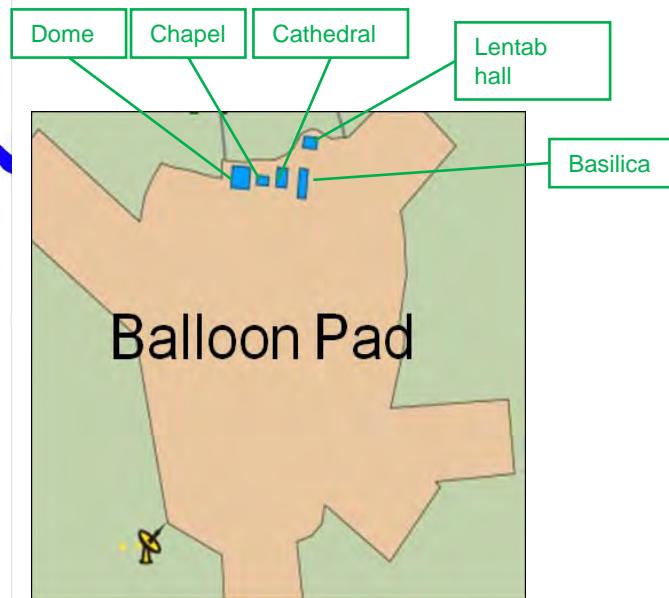
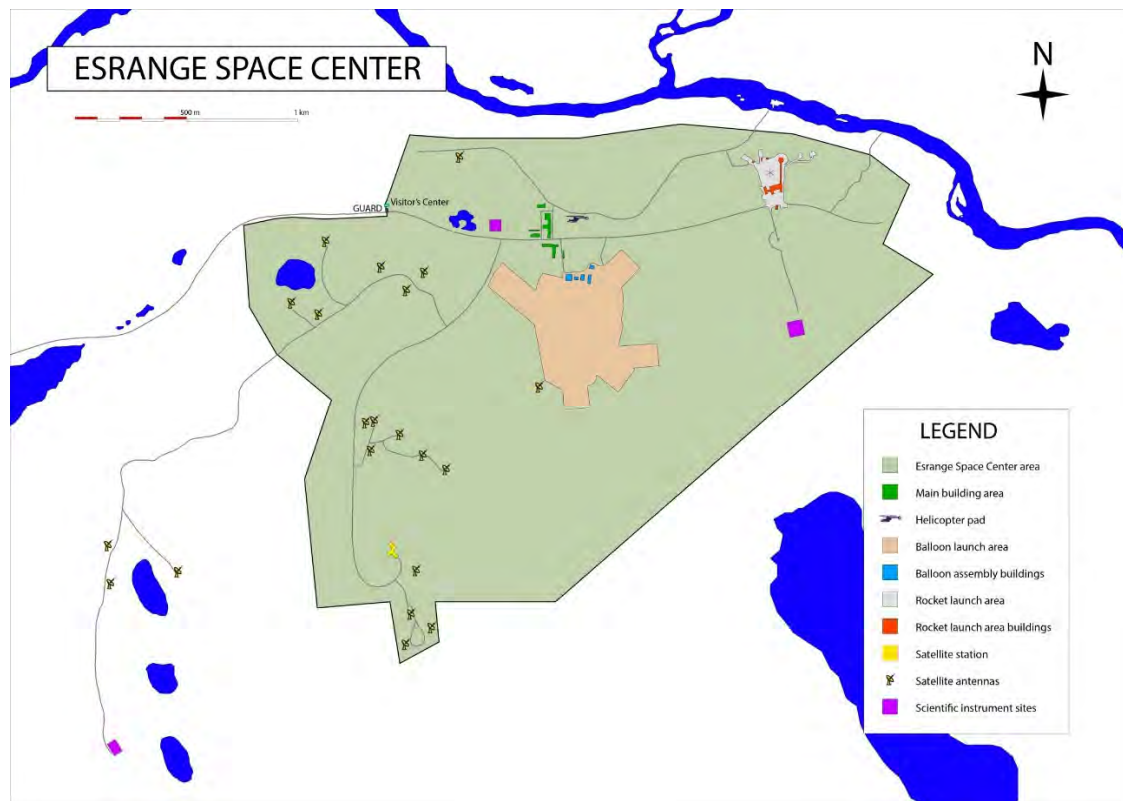
# WELCOME PRESENTATION



# VÄLKOMMEN TILL SVERIGE OCH ESRANGE!



# BASE LAYOUT



# RESTAURANT

TIMES MAY VARY DURING CERTAIN PERIODS. YOU WILL BE INFORMED OF ANY CHANGES



- Restaurant will be open in main building from 5<sup>th</sup> of April until the end of the campaign for all meals.
- 1<sup>st</sup> of April and 4<sup>th</sup> of April is the restaurant open for breakfast and lunch, pre-order dinner boxes.
- 2<sup>nd</sup> of April and 3<sup>rd</sup> of April pre-order boxes for breakfast, lunch and dinner. (This may change if we have other guests in the hotel).
- Special diets – If you have a special diet...
  - Make sure that you have added the information in the attendance list sent to SSC.
  - Contact the SSC Project Coordinator as soon as possible
  - No peanuts in Main building. We have two very allergic people working here!
- Alcohol
  - You may not bring your own alcohol into the main building– drink in common areas only.
  - It is possible to buy alcohol in the restaurant during dinner opening hours.



# BREAKFAST



- 07:15 – 09:00 in the Restaurant
  - Extra tables in the Billiard Room, this might change depending on the covid situation.
  - Eating times might be staggered to keep distance between the various groups on-base and SSC staff
  - 1<sup>st</sup> of April and 4<sup>th</sup> of April breakfast is served as usual in the restaurant.
  - 2<sup>nd</sup> of April and 3<sup>rd</sup> of April breakfast boxes.



# LUNCH AND DINNER



- 12:00 – 13:00 Lunch **TBD**
- 18:00 – 19:00 Dinner **TBD**
  - Extra tables in the Billiard Room, this might change depending on the covid situation.
  - Eating times might be staggered to keep distance between the various groups on-base and SSC staff
  - 1<sup>st</sup> of April and 4<sup>th</sup> of April lunch is served as usual in the restaurant, pre-order dinner boxes.
  - 2<sup>nd</sup> of April and 3<sup>rd</sup> of April there will be lunch and dinner boxes.



# HOTEL



- **Kitchens**

- Feel free to use
- Please keep clean and tidy. Recycle!
- Throw out food before you leave, please

- **Sauna**

- Open – any restrictions will be posted

- **Gym**

- Open – any restrictions will be posted

- **Questions around hospitality**

- Please contact the SSC project coordinator

- **Hotel will be cleaned every fifth day**

- Please help staff by being out of the room during cleaning

- **Smoking**

- It is illegal to smoke in the entrances to buildings
- Please use designated areas
- Dispose of remains in marked containers (not in wastebins)





## IMPORTANT

Espace Space Center is a Civilian Protected Area, which means that it is **PROHIBITED** to; **Photograph, Image, Describe or take Measurements** of the civilian protected area without special authorization



# PHOTO PERMISSIONS



- Permission to photograph on base is obtained on a campaign basis by contacting the SSC Campaign Manager
- General permission is given to photograph:
  - Inside Conference Rooms
  - Inside Hotel & Restaurant
  - Inside Buildings
  - Inside SCI Operations, TM, SCI Center
- Ask SSC Staff before taking photos of them
- Ask before taking pictures of other equipment that does not belong to you
- You can only take pictures outside if escorted by an SSC member of staff

***You must not take pictures of any Antennas***

***Any pictures used in publications etc must be cleared by SSC before publication***



# BASE SECURITY ZONES



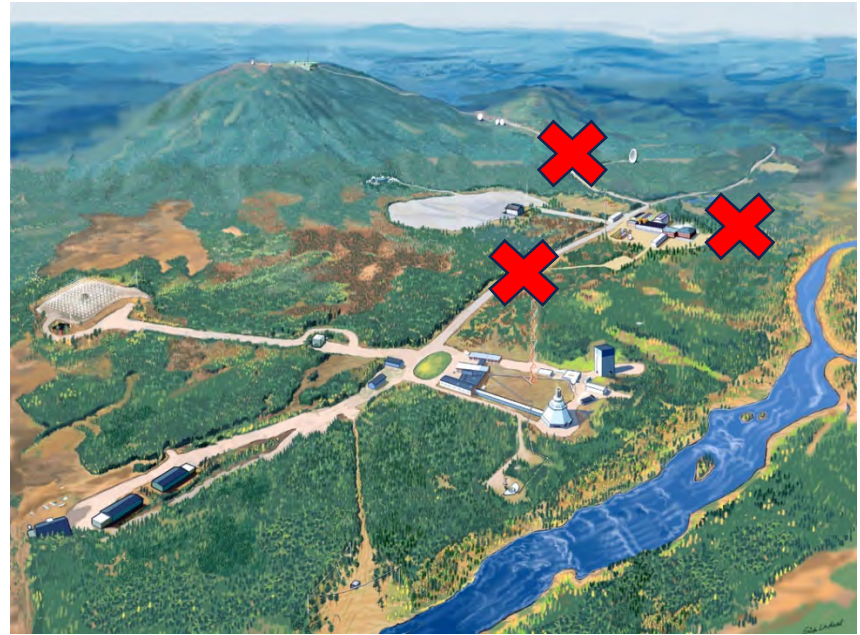
By accepting the terms and conditions when signing for the access card **you are required to follow the regulations stated on the zone signs** and not enter a zone without permission

Internal

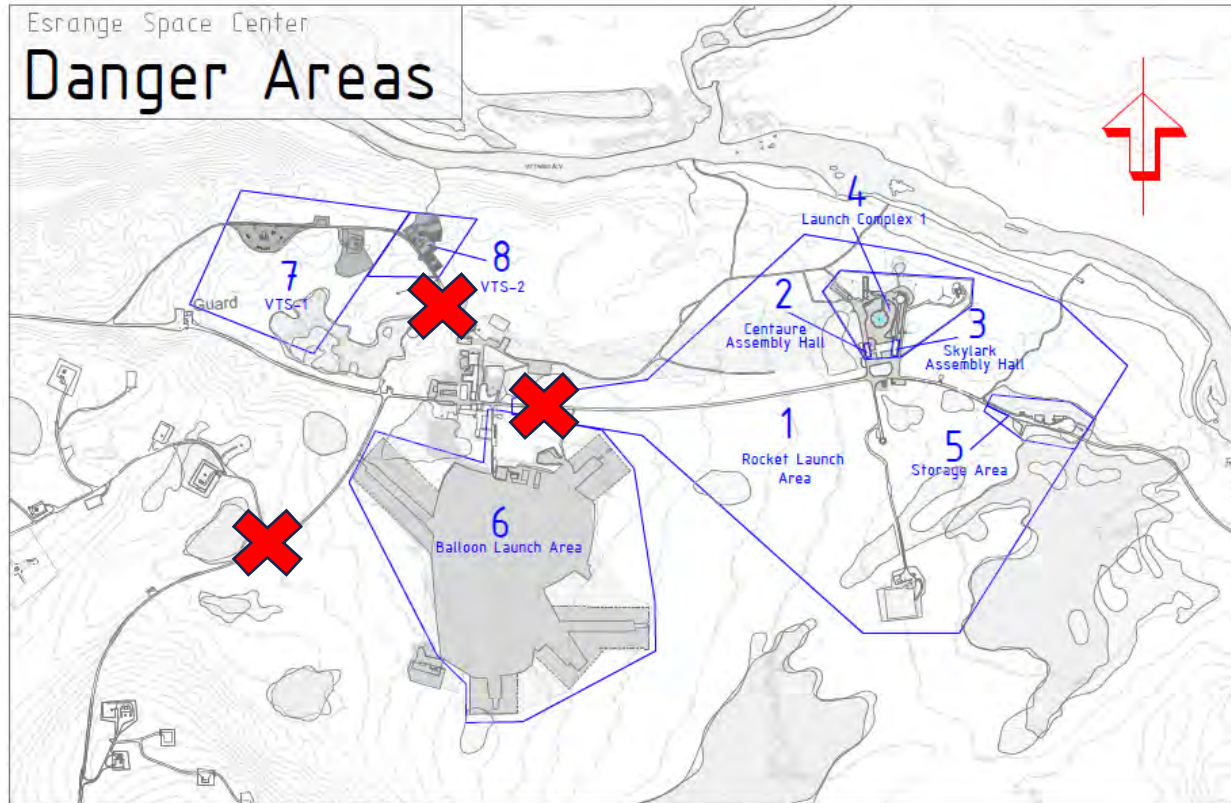
# ACCESS RESTRICTION



- Do not enter an area that you are not permitted to be in – most visitors are limited to zone 1 and 2
- Do not pass signs even if it is physically possible
- Access to Radar Hill is with SSC escort only
- If you do not have access to an area and you believe you should, contact the SSC Campaign Manager



# DANGER AREAS



Access to Danger Areas must always be authorized by the responsible Safety Officer.

# MULTIPLE CAMPAIGNS



- SSC may have multiple campaigns on base at the same time
- Please check information boards so you are aware of any access restrictions
- Other campaigns may be working on different schedules – so please be aware that they may be sleeping when you are not
- If you are ever in doubt – ask!
  
- Planned campaigns
  - STORT SF1&2 – German static fire
    - March 22 – March 31 (April 3, TBD)
  - SERA 4 – French student rocket
    - April 18 – May 1
  - HADT – ESA parachute test
    - (June 6) July 4 – August 28
  - VTS 1+2 – continuously





# SAFETY PRESENTATION



# SAFETY PRESENTATION OUTLINE



- Part 1: Applicable to all visitors
- Part 2: Rocket campaigns only
- Part 3: Balloon campaigns only



# SAFETY PRESENTATION

## PART 1

# Your safety is our top priority

**SSC has the responsibility to keep you safe.**

Please follow all instructions:

- ✓ Ask if you have questions
- ✓ Please be aware of and respect access restrictions
- ✓ Do not pass closed barriers, signs or red lights
- ✓ Before any kind of work we always do a risk assessment



In case of emergency



**Call 112**

**Call Guard: Extension  
2333 or +46706853804**

## SAFETY INFO

### Access to Esrange Space Center

- ✓ SSC has to know who are inside ESC area at all times.
- ✓ Everybody who passes the Guard-gate has to check in or out by swiping the access card





## SAFETY INFO

# Access to Esrange Space Center

### You always need a Personal Access Card

- ✓ It is mandatory to wear your access card/ badge visible at all times
- ✓ The card is issued by the Guard
- ✓ The access card is a photo card, or for shorter guided visits, a visitor card
- ✓ You will have your own individual access

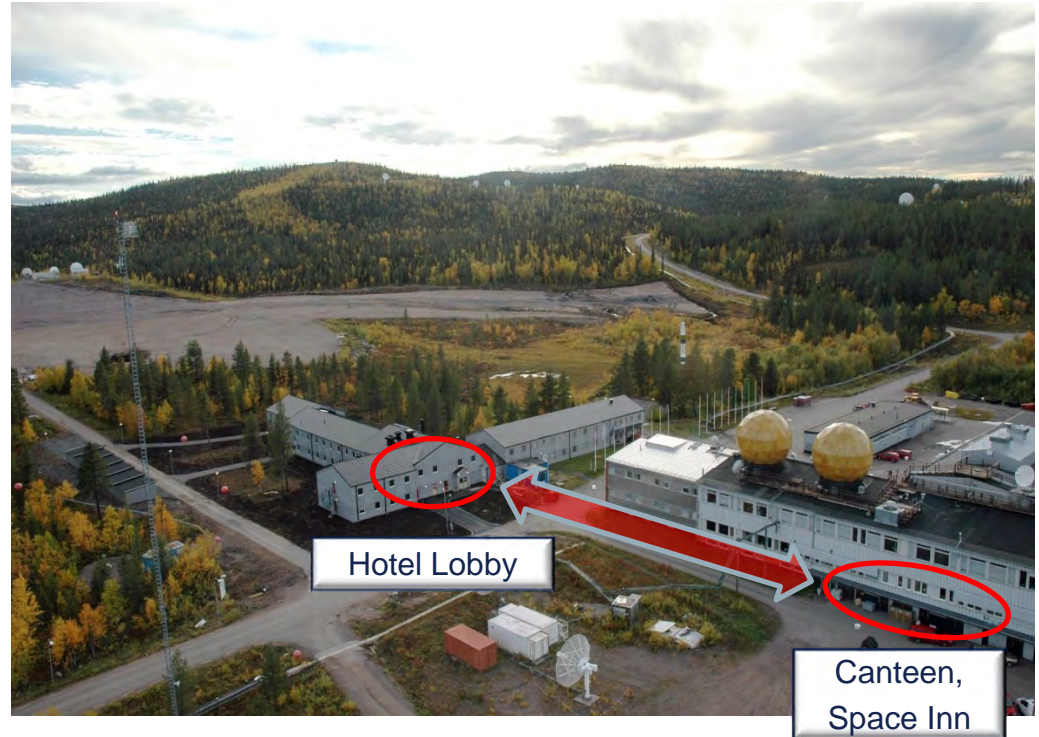


## SAFETY INFO:

# Assembly points in case of evacuation

In case of evacuation or other emergency go to nearest assembly point:

- ✓ The Canteen, Space Inn, is the main assembly point
- ✓ The Hotel Lobby will be used if it's not possible to use the Canteen
- ✓ Opposite Launching



# CAMPAIGN SAFETY INFORMATION

## Campaign information

Campaign information can be found:

- ✓ Voice messages by Public Address, PA
- ✓ Signs.
- ✓ On the Count Down Screens:
  - ✓ Count down status information
  - ✓ The UTC time
- ✓ Ask at morning meetings
- ✓ Ask the SSC Campaign Manager



## SAFETY INFO:

# First Aid

First aid is available on base:

- ✓ Equipment is available in all base areas
- ✓ SSC staff are trained in first aid
- ✓ SSC rescue team available during working hours/launches



## SAFETY INFO: Outside the base

Most accidents occur off base and along the Esrange road:

- ✓ Careful in bad weather, especially winter
- ✓ Moose and reindeer are often on or near the road





# CAMPAIGN SAFETY INFORMATION

## Campaign information

For more information or just to be sure – Call:

- ✓ Rocket Operations @ +46 980 72050 (2050)
- ✓ Balloon Operations @ +46 980 72155 (2155)
- ✓ Safety @ +46 980 72048 (2048)
- ✓ Guard @ +46 980 72333 (2333)

Your SSC Campaign Manager will provide you with a contact sheet for key personnel

There are no stupid questions!



# SAFETY PRESENTATION

## PART2: ROCKET CAMPAIGNS

## CAMPAIGN SAFETY INFORMATION

# Rules during rocket campaign operations

- ✓ You are NOT allowed to be outdoors, or in a vehicle, from 15 minutes before a rocket launch
- ✓ You must stay inside until the Safety Officer announce (by Public Address, PA) that it's safe to be outside again
- ✓ Pay attention to the warning signals:
  - ✓ Warning Sirens:  
- - - - - 60 – 45 – 30 – 15 min before launch
  - ✓ End Siren:  
\_\_\_\_\_ End of CD / No danger anymore
- ✓ NO visitors under 15 years of age are allowed inside the Esrange Base area during count down





# SAFETY PRESENTATION

## PART3: BALLOON CAMPAIGNS



## CAMPAIGN SAFETY INFORMATION

### Rules during balloon campaign operations

The following rules are SSC requirements, NASA requirements may exceed these and should of course be followed if more stringent



## CAMPAIGN SAFETY INFORMATION

# Rules during balloon campaign operations

## Road Barriers

- Barriers to the pad will be in place at the start of countdown
- Access will be restricted by SSC Operations

## Risk Area

- Unless otherwise permitted the risk area must be kept clear of all non-essential personnel during the countdown
- Stay away from the flightline unless authorized



## CAMPAIGN SAFETY INFORMATION

# Rules during balloon campaign operations

## Working on the pad

- Obey any commands given by SSC staff
- Wear protective PPE
- Hanging loads must be protected by safety straps – must not work under a hanging load
- If your work is complete on the flightline then return to a safe location away from the work area



## CAMPAIGN SAFETY INFORMATION

# Rules during balloon campaign operations

## Inflation Hoses

- Unless you are involved in inflation stay at least 100m from the hoses
- Stay clear of the gas trucks unless authorized

## Pyro Risk Area

- Do not enter the pyro risk area without permission
- It is identified with the following signs
- If you do enter make sure you leave phones and radios behind



## CAMPAIGN SAFETY INFORMATION

# Rules during balloon campaign operations

## At launch

- The balloon may have to be brought down quickly so stay in a safe area away from the launch direction
- The balloon may move in an unexpected direction – if the balloon comes overhead then move indoors and do not look up. **Danger! Falling objects.**
- Listen for the Operations offices on the PA – they will tell you when it is safe to leave cover
  - If the balloon does not clear the pad area quickly then move under cover – wait until clearance is given.





**We help  
Earth benefit  
from space**

# COVID-19 PROCESS

Esrang Space Center

Molly Elenius

2022-02-21



# INTRODUCTION

## COVID-19 MITIGATION ACTIONS AT ESRANGE SPACE CENTER



- Due to the spread of the Covid-19 virus several campaigns has been postponed in 2020/2021.
- Several preventive measures has been taken to mitigate the risk for spreading Covid-19 at Esrange Space Center. This plan reflects the situation when the base is in campaign operations. The plan has a high-level of uncertainty as it is dependent on the evolution of the Covid-19 situation in the participating countries, Sweden and the restrictions imposed.
- Each campaign will be evaluated individually, and risk analysis/mitigations will be done on a regular basis to enable safe campaign operations.
- This means that this plan can be changed before campaign start.

# EXPECTATIONS

2022-02-21



- SSC will supply hand disinfectant in the hotel and at your workplaces.
- Protective facemask shall always be on when working with a distance closer than 2m TBD
- SSC will only have mandatory personnel present at the base at all times, which will have impact on the service levels and customers should expect slightly longer response times for late requests
- Signs on the base with instructions will indicate restrictions in different areas
- Campaign participants at Esrange Space Center will need to adapt to the new situation with Covid-19 mitigations in place and the stay will not be as convenient as under normal circumstances.
- Covid-19 quarantine wing in the hotel with 1 kitchen and 6 rooms TBD

## ENTRY BAN

**From 9 February 2022 all covid related entry restrictions are lifted when entering Sweden from another EU/EEA country + Switzerland.** The same applies for transit via an EU/EEA country or Switzerland, **if you are processed for immigration in the first destination country.** Regardless of where your journey originally started.

From the rest of the world the entry ban is still in effect until 31 March 2022.

- **Fully vaccinated travellers holding vaccine certificates in one of the approved countries, can enter at least 14 days after the second dose without a negative test.**
- Residents of exempted countries will be allowed to enter Sweden but needs a valid covid certificate.

<https://polisen.se/en/the-swedish-police/the-coronavirus-and-the-swedish-police/travel-to-and-from-sweden/>

# APPROVED COUNTRIES



## What is a so-called approved country/territory?

- So called approved countries/territories are countries/territories whose vaccine certificates are considered equivalent to the EU Covid Certificate of vaccination, meaning that the certificates can be checked and verified in the same technical system as the EU Covid Certificate.
- **Fully vaccinated travelers with vaccine certificates issued in these countries at least 14 days ago, will be allowed entry to Sweden.**
- The exemption is in full connected to the vaccine certificate, citizenship or residence does not give exemption. Regular entry requirements regarding valid passport and visa still apply.

## Approved countries/territories:

Albania	Panama
Andorra	San Marino
Armenia	Serbia
Cabo Verde	Singapore
El Salvador	Switzerland
Faroe Islands	Togo
Georgia	Turkey
Israel	Ukraine
Lebanon	United Arab Emirates (UAE)
Moldova	UK + Guernsey, Isle of Man and Jersey
Monaco	USA
Morocco	The Vatican
New Zealand	
North Macedonia	

# EXEMPT COUNTRIES



## What is a so-called exempt country/territory?

- These countries are assessed to be low-risk in terms of contagion. This means that foreigners who can document that they reside in these countries will be allowed to enter Sweden if they otherwise fulfill the entry given in the Schengen Border Code and the Visa Code.
- **Foreigners who can document that they reside in any of these countries are exempted from the entry and will be allowed to enter Sweden if they can document residence in one of the countries (not merely hold citizenship), and hold a valid covid certificate.**
- The EU Covid Certificate, a negative test max 72 hours old, or a vaccine certificate issued in an approved country is accepted.
- Vaccine certificates from exempted countries is not accepted.

## Exempt countries:

Bahrain  
Chile  
Colombia  
Hong Kong  
Indonesia  
Kuwait  
Macao  
New Zealand  
Peru  
Qatar  
Rwanda  
Saudi Arabia  
South Korea  
Taiwan  
United Arab Emirates  
(UAE)  
Uruguay



# PRE-APPROVALS

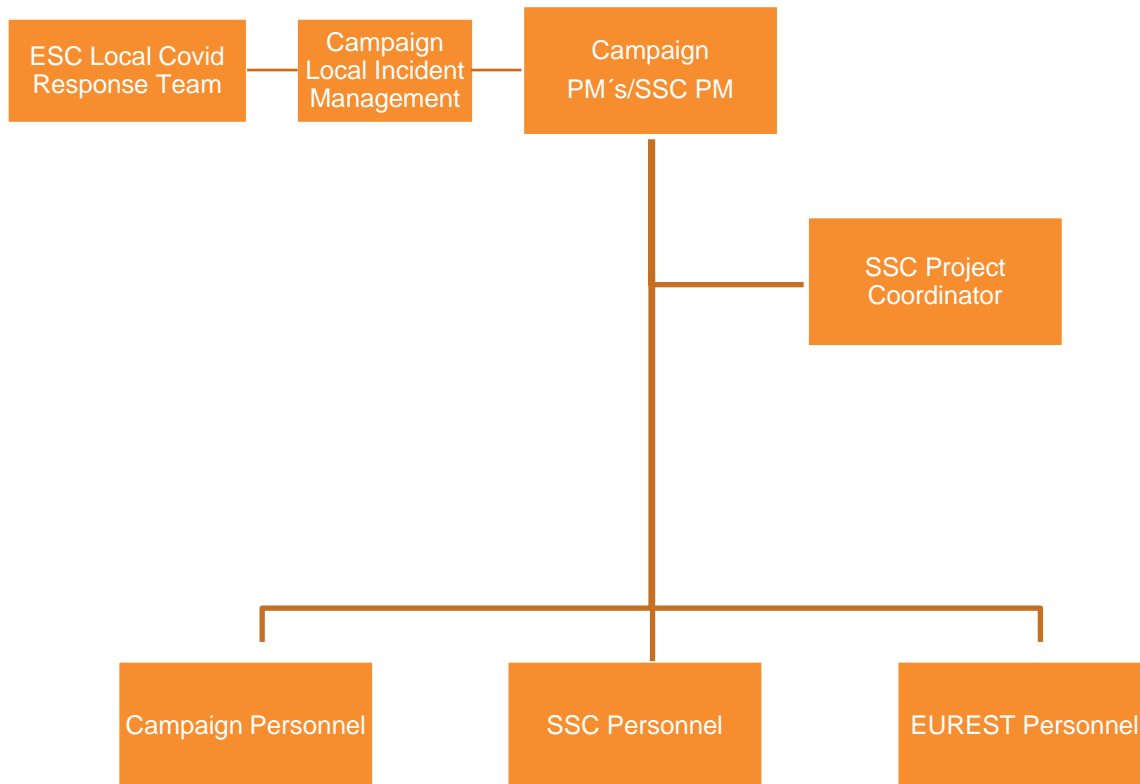


- SSC can not assist with pre-approvals since the Swedish Police Authority does not accept applications in advance.
- <https://polisen.se/en/the-swedish-police/the-coronavirus-and-the-swedish-police/faq/>

## **Pre-approvals and notifications**

The Swedish Police Authority does not issue any kinds of pre-approvals or notifications and it is not possible to apply for an exemption in advance. The decision in each individual case will be made upon arrival at the border control point.

# CAMPAIGN COVID-19 ORGANISATION



# WE HELP EARTH BENEFIT FROM SPACE



[www.sscspace.com](http://www.sscspace.com)